

PART OF THE NW.1/4, OF SECTION 28, T.6N., R.2W., S.L.B. & M.

750

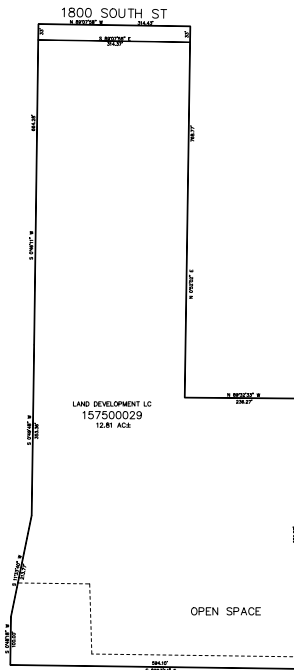
TAYLOR LANDING PH 1A

IN WEBER COUNTY

TAXING UNIT: 514

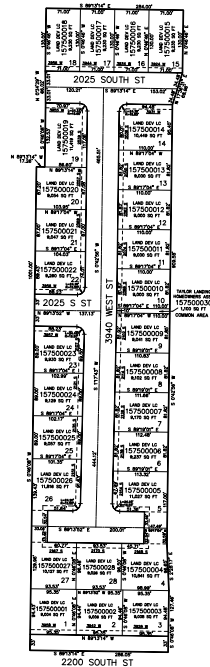
SCALE 1" = 200'

SEE PAGE 78-4



SEE PAGE 78-4

SEE PAGE 78-4



SEE PAGE 78-4

FOR COMPLETE ENC DATA SEE
ORIGINAL DEDICATION PLAT IN
BOOK 90, PAGE 60 OF RECORDS.